

# Introduction to CORGAL® Tanks



CorGal® is a registered trademark of Water Storage Tanks, Inc. and is used with permission. All product specific material are the property of Water Storage Tanks, Inc. and used with permission.

© 2016 Water Storage Tanks, Inc. All rights reserved.

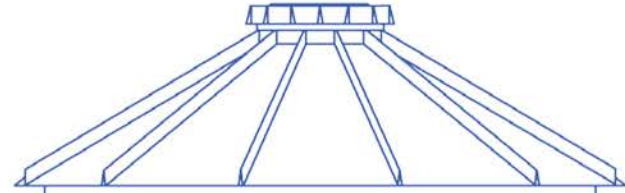


# YES, WE CAN!

Bring us your water management  
problem and we will solve it







**Water Storage Tanks, Inc.**

[www.waterstoragetanksinc.com](http://www.waterstoragetanksinc.com)

# Outstanding Customer Service

Our experienced team will help plan, design, and install high-quality, engineered tanks





# What We Do Well

- Engineering
- Customization
- Service and Support



# Why CorGal<sup>®</sup>?





# Premium Materials

CorGal® Tanks meet the following minimum standards:

- G-115 hot dipped galvanization
- 20-gauge steel sidewalls
- 24-gauge steel roof panels
- Designated bottom wall sheets to better distribute weight
- Full tank geotextile preliner
- 24 mil PVC flexible membrane liner
- Schedule 80 PVC flanges or hot-dipped galvanized steel flanges





# Exceptional Design

Meets the International Building Codes (IBC) 2013 standards:

- 115 mph Wind Load
- Seismic Design Category 2B
- Site-Specific Live Loading

Equipped with a preliner and a flexible membrane liner

An engineered concrete floor or foundation is required







# Superior Custom Engineering

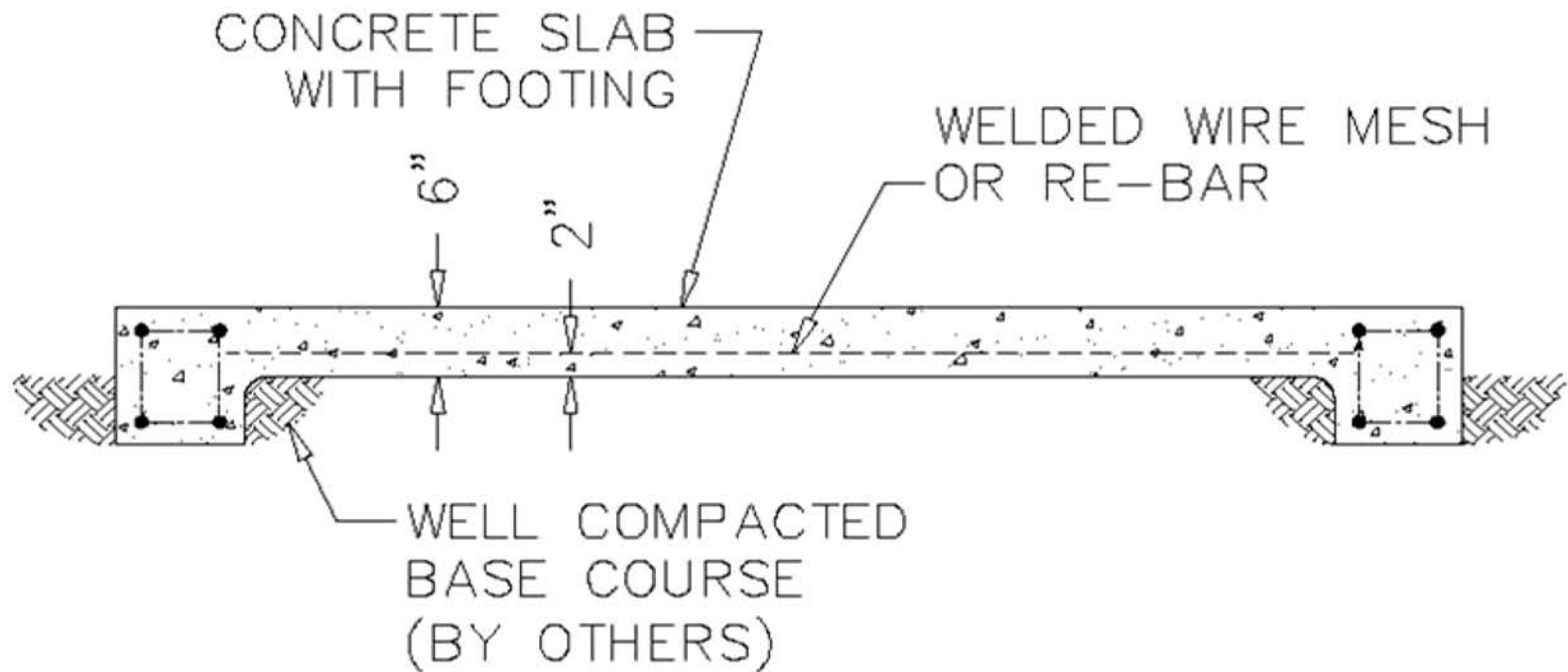


We offer a thorough, site specific structural design calculation package (SDCP), stamped by a professional engineer licensed in your state

Ensures tank is built to the location's requirements and complies with local ordinances and laws





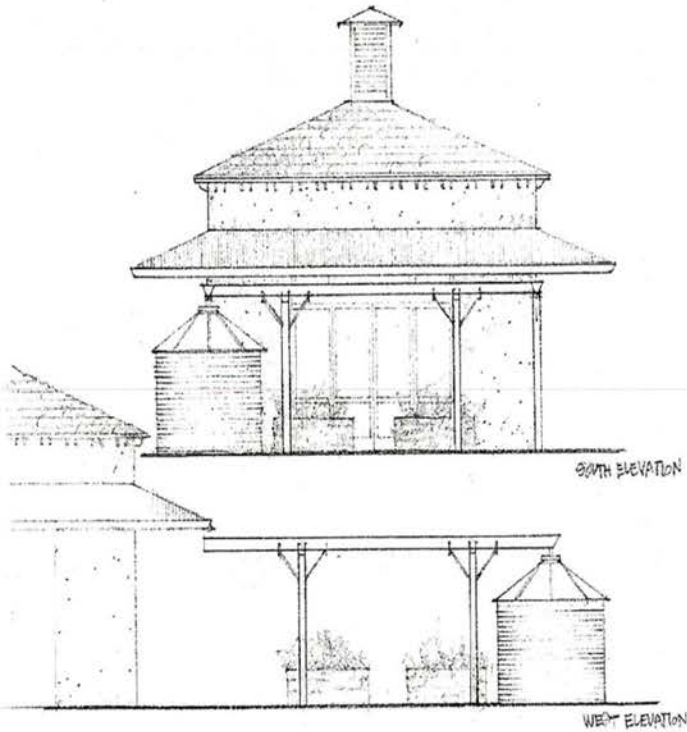


# Concrete Foundation

Stabilizes tank position and limits movement during extreme weather or natural disasters

State licensed structural engineer for the project must:

- Design the foundation
- Specify the type, size and embedment depth of the anchor



**Ability to Match Drawings**





# Quick & Safe Assembly Process

- Tank arrives unassembled and built on location
- Can be erected on difficult-to-access project sites
- Can be disassembled and relocated, if necessary





# Numerous Applications

- Rainwater Harvesting (for irrigation or potable water use)
- Fire Protection
- Stormwater Management
- Thermal Storage and Water Cooling Tanks
- Enclosures, Houses, Roof Systems, Canopies
- Brewery and Winery Tanks
- Many other applications





# Tanks Promote Water Conservation

Placing tanks in front of the building shows off "green bling"





# Tanks Can Help Save Lives

CorGal® Tanks are engineered to be Fire Protection Tanks for active or passive fire protection systems







# Tanks Can Be Unique

Enclosures can be designed into a playhouse or home

Teach the public about water conservation





# Tanks Can Be Architectural Features

Incorporate tanks into the building's design

Use tanks as part of a water feature in front of building

Roof systems can be used on top of round structures







# Tanks Can Educate The Public

Add an educational sign next to the tank







# Tanks Can Teach Children

Educates children about rainwater harvesting  
and water conservation

Some schools offer classes based around the  
tank with rainwater harvesting system





# Tanks Can Save Money

- Available Local Rebates
- Amount of water saved annually
- Reduction in infrastructure costs





# ROI for Rainwater Harvesting

## Initial Cost Savings

- Alternate to well or municipal hook-up fees (or may reduce municipal requirement)
- Local tax credits and/or rewards benefits

## Ongoing Cost Savings

- Reduction in municipal water and sewer fees
- May reduce regular purification needs
- May expand usable life of appliances (no hard water)

## Indirect Benefits

- May assist with health issues (no fluoride, minerals, chlorine, etc.)
- Environmentally responsible action





# ROI for Stormwater Management

## Initial Cost Savings

- Vertical storage allows for smaller footprint and less land acquisition
- Minimal site prep/excavation

## Ongoing Cost Savings

- Maintenance may be less than for storm basins
- Option to utilize water for irrigation

## Indirect Benefits

- Better aesthetics than ponds/basins





# Residential Projects

Smaller sizes available for residential homes







# Residential Projects

Smaller sizes available for residential homes





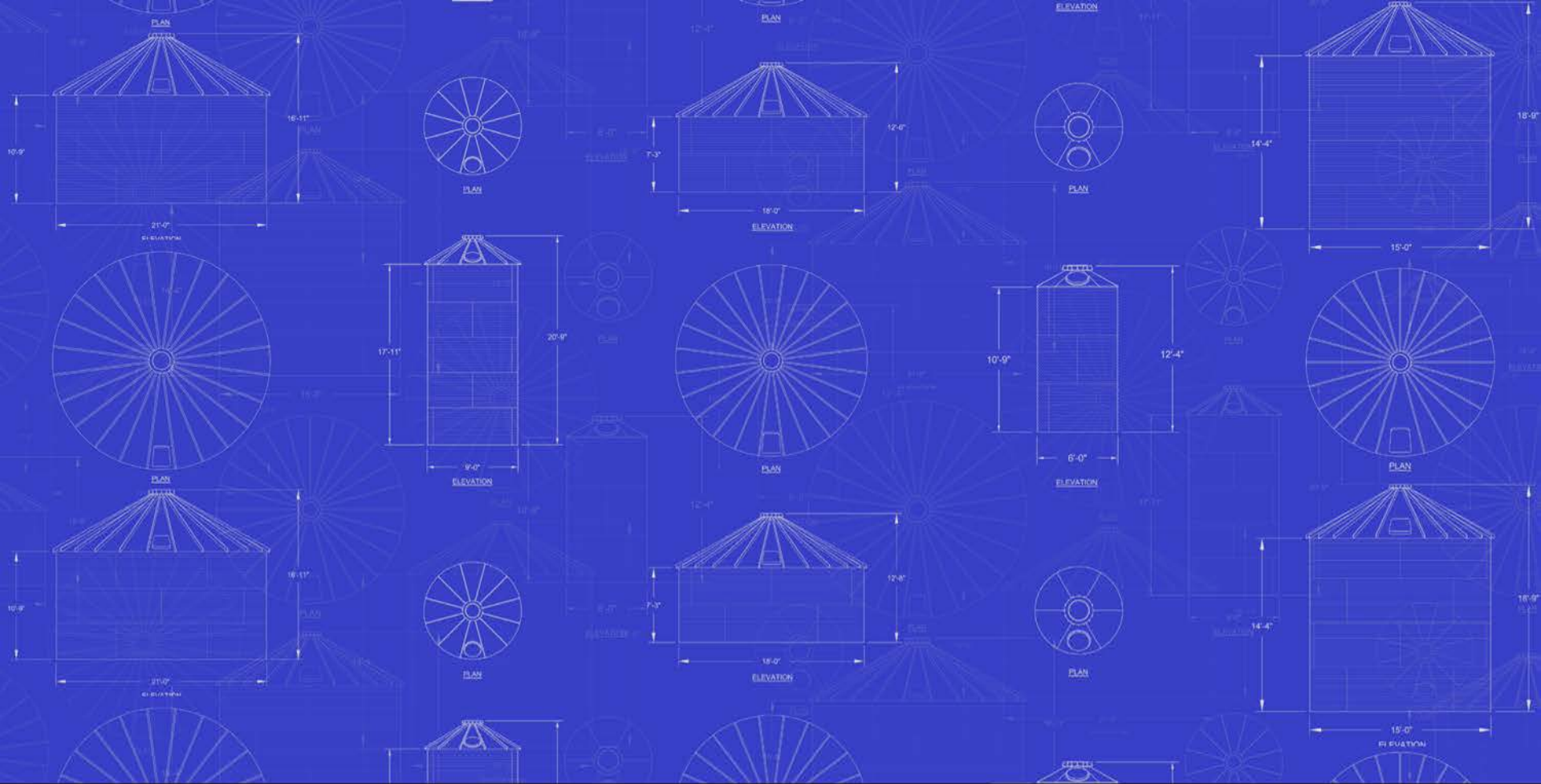


# Residential Projects

Smaller sizes available for residential homes







# Drawings & Specifications

Standard Tank Models are available at:

[www.CorGalTanks.com](http://www.CorGalTanks.com)







# Annular vs. Spiral Corrugation



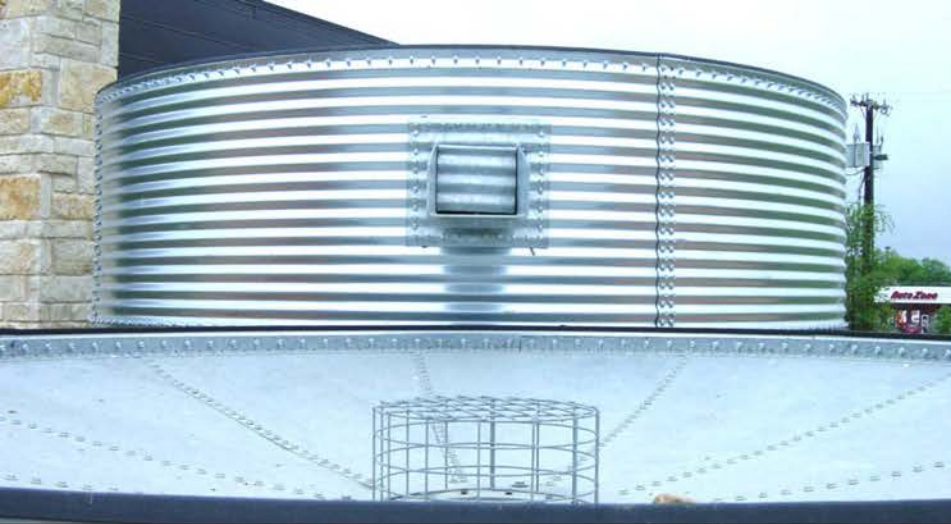




## Most Popular Roof Types

- 30° Flat Seam Roof
- 10° High Rib Roof
- 30° High Rib Roof (also available in oversized)
- Open Top





# Specialty Roof Types

- Inverted Roof
- Corrugated Flat Roof
- Flat Roof
- Membrane Cover





# Roof Raftering

Engineering is the ultimate factor in deciding structural raftering

As a general rule, a low profile roof tank larger than 36' in diameter will require rafters and beyond 39' may also require a center pole







# Roof Safety Ring & Roof Ladder

OSHA Compliant







# Wind Ring





# Side Ladder with Security Cover

OSHA Compliant

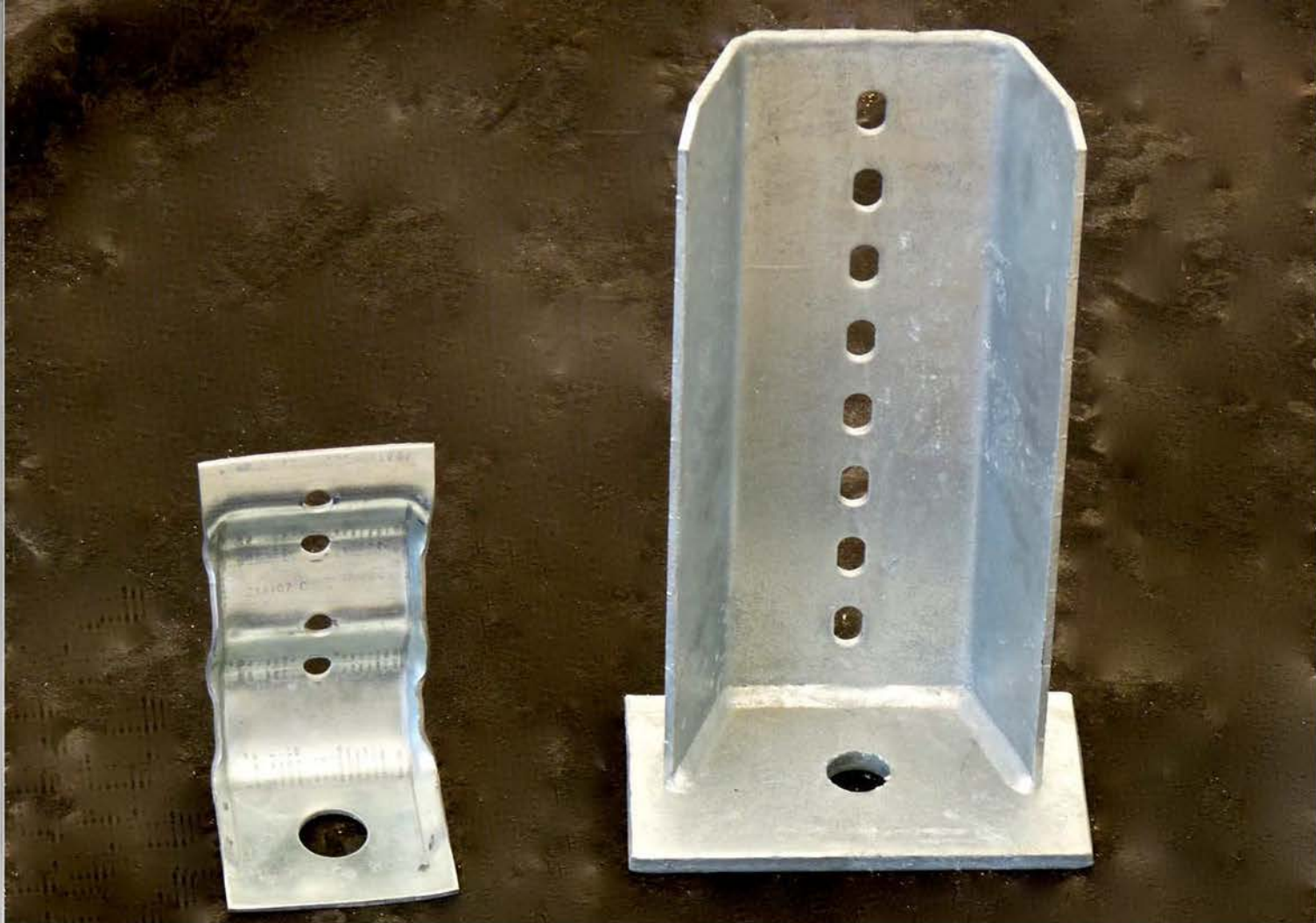






# Water Level Indicator

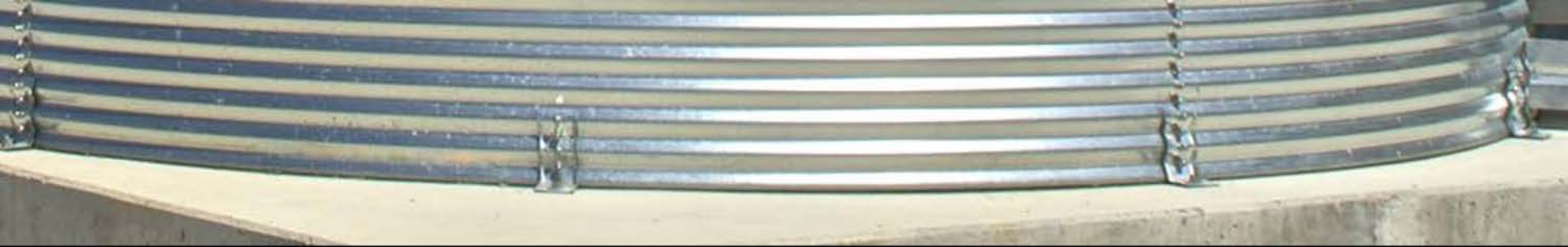




# Anchoring Systems

Standard Anchor • Seismic Anchor

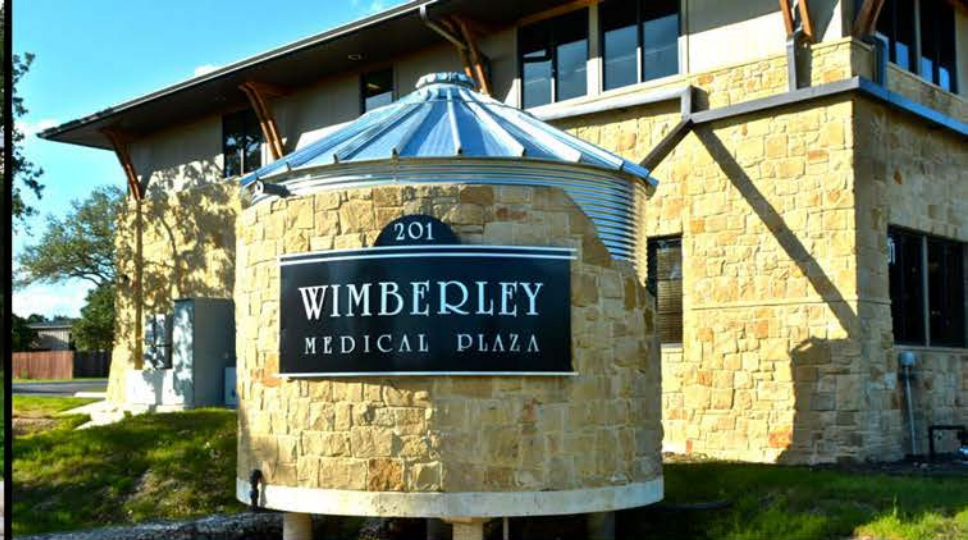




# Different Anchor Options

- Standard Anchors
- Seismic Anchors
- Seismic Stiffener Anchors





# Masonry Exterior Options





# Steel Cladding Exterior





## Other Exterior Ideas

- Patina
- Painted
- Wood
- Vine Trellis

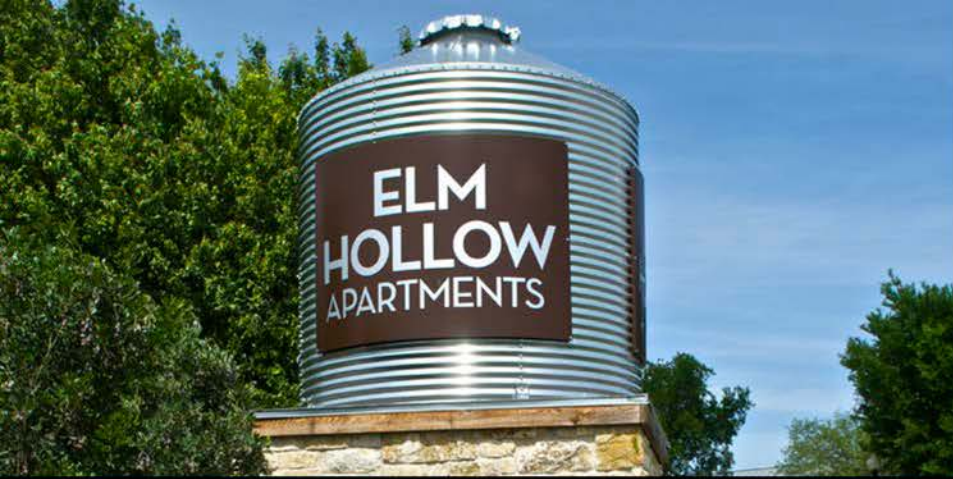




## Tanks Can Be Signage

- Cut-vinyl letter decals applied onto corrugation
- Paint signage directly onto corrugation
- Large logo decal applied onto corrugation
- Flat face clad exterior with painted sheets & painted logo





## Tanks Can Be Signage

- Signage on flat material installed onto tank via stand-offs
- Separate 3D letters installed onto tank via stand-offs
- Electrical signage attached onto tank

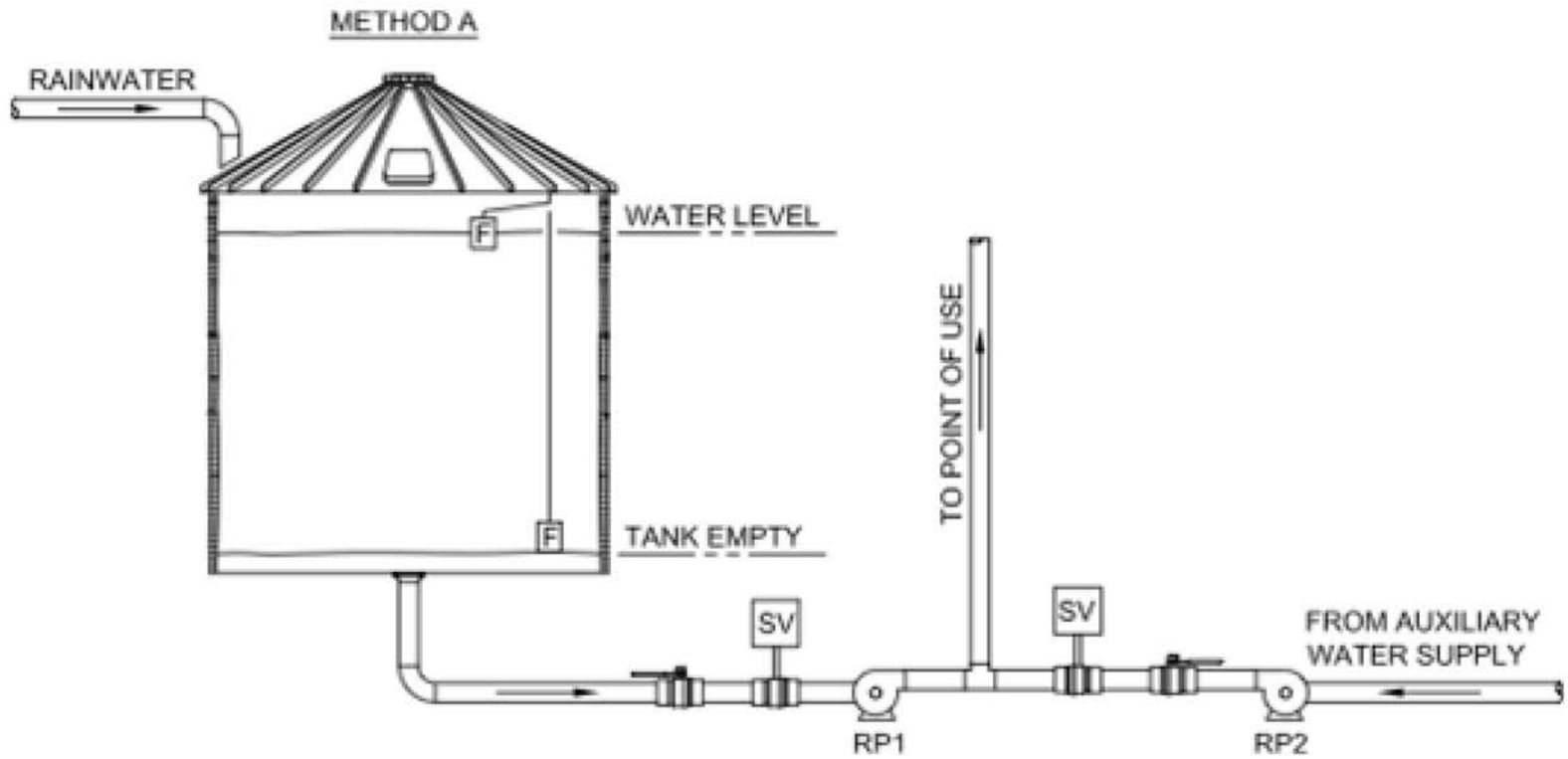




## Multiple Tower Options

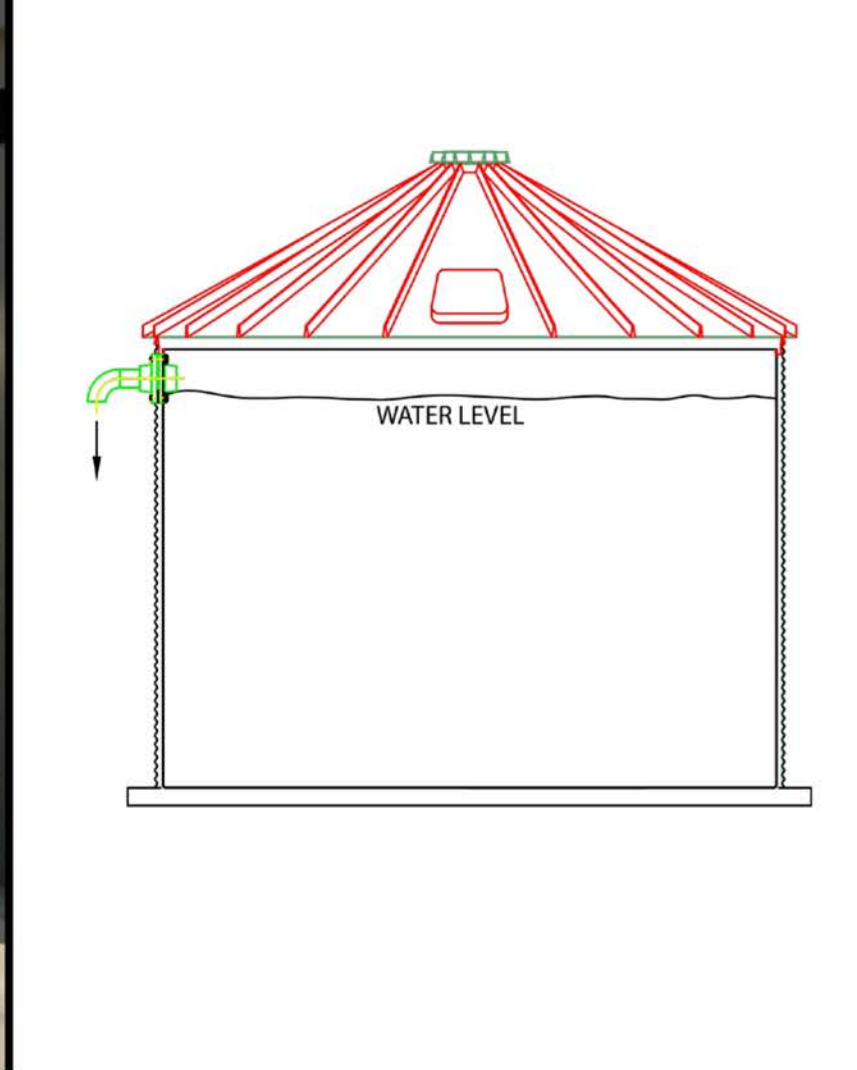
- Wood, steel, or a combination of both
- Round, square, or octagonal platform
- Straight or slant leg





# Simple Design

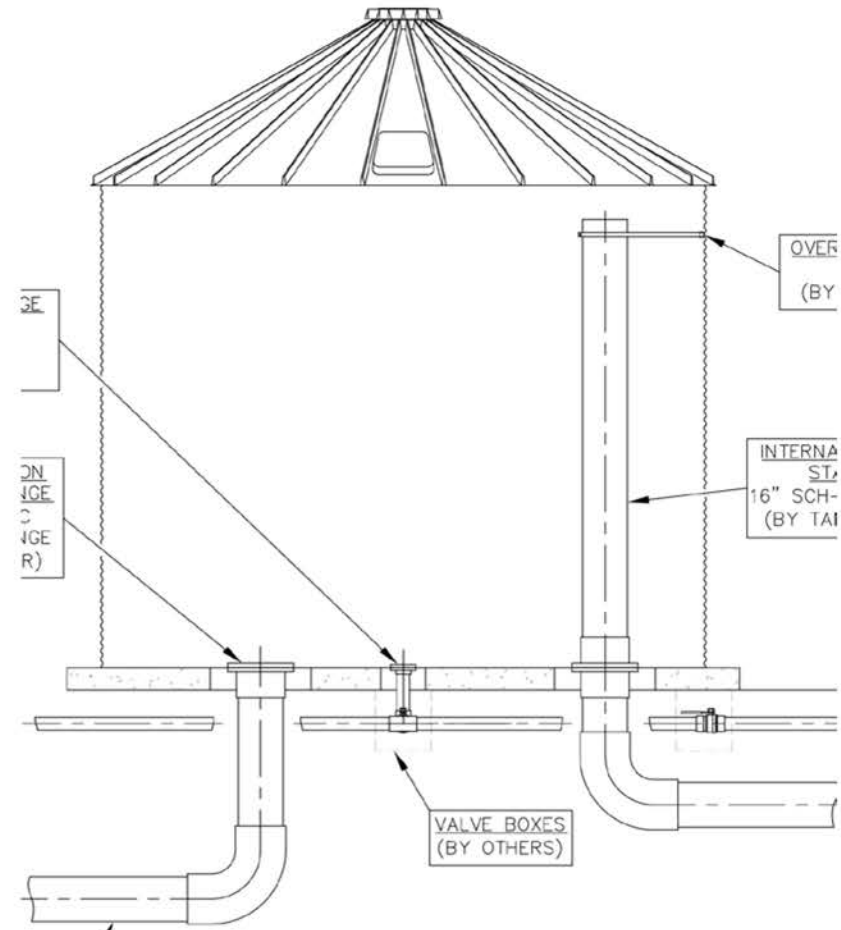




# External Overflow Pipe

Exterior Sidewall

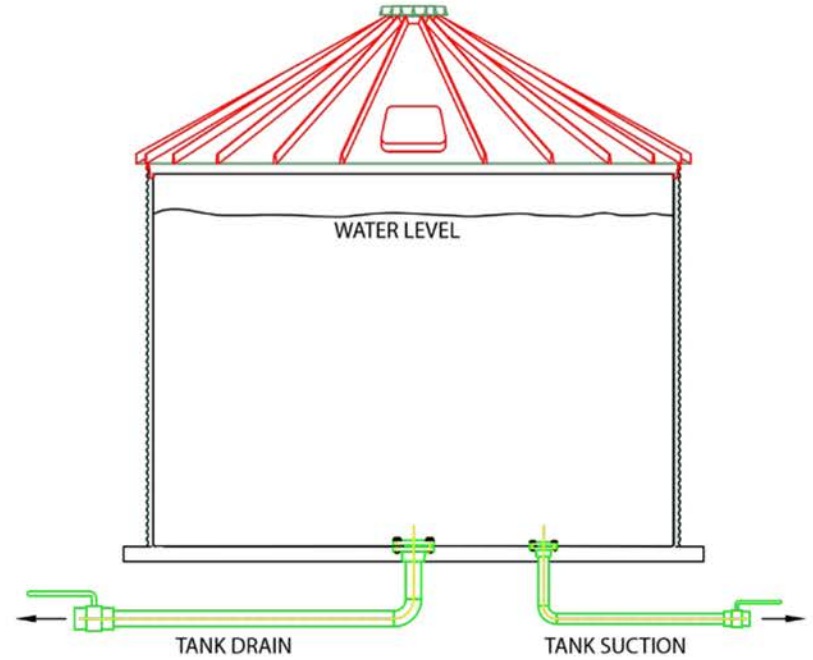




# Internal Penetrations

If using floor/ internal penetrations, the tank will have a cleaner exterior appearance and façades may be added

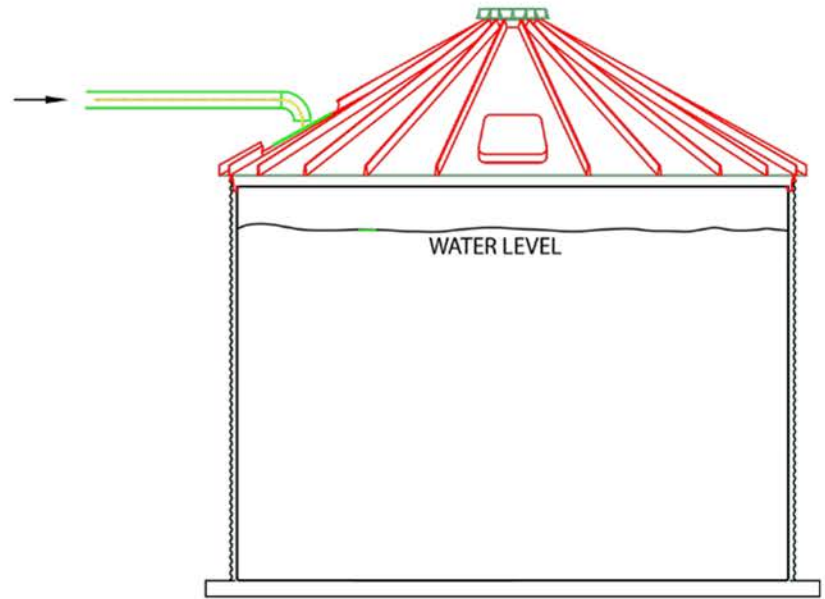




# Internal Penetrations

Drain Pipe and Outlet (Suction) Pipe  
Out of Bottom Separate

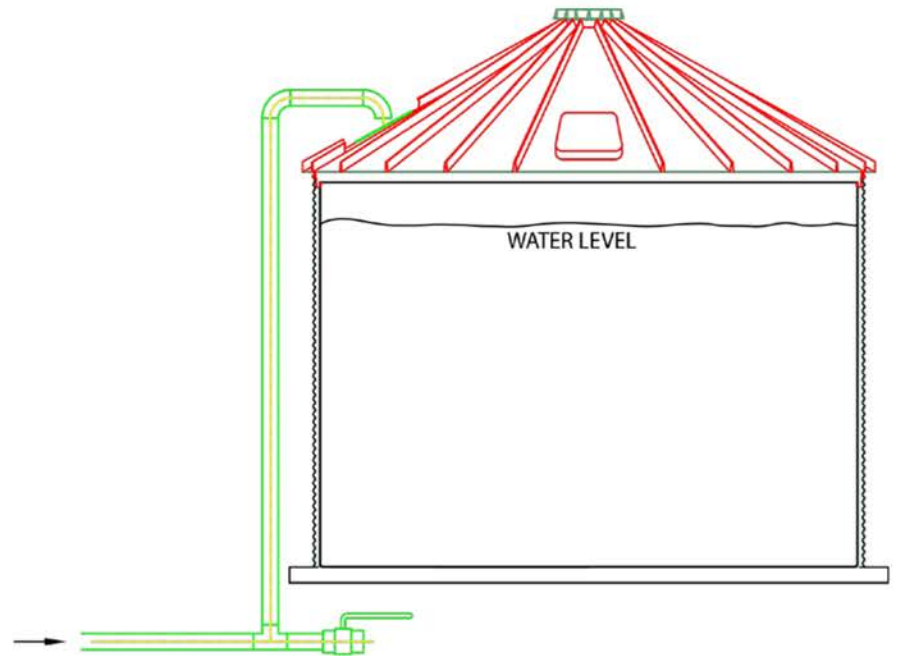




# Water Supply Pipe

Overhead to Roof

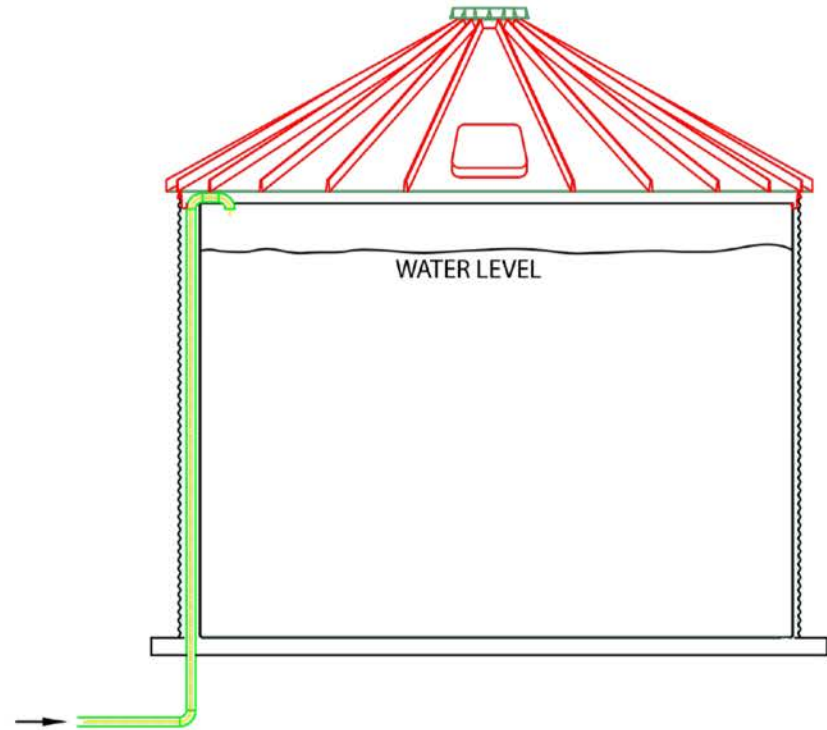




# Water Supply Pipe

In-Ground to Roof

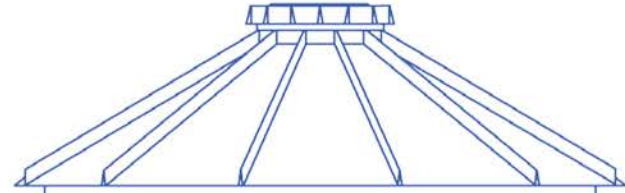




# Makeup Water Pipe

Interior Sidewall  
between Liner and Structure





**Water Storage Tanks, Inc.**

[www.waterstoragetanksinc.com](http://www.waterstoragetanksinc.com)

# Outstanding Customer Service

Our experienced team will help plan, design,  
and install high-quality, engineered tanks





# YES, WE CAN!

Bring us your water management  
problem and we will solve it





# Thank you for your time



CorGal® is a registered trademark of Water Storage Tanks, Inc. and is used with permission.  
All product specific material are the property of Water Storage Tanks, Inc. and used with permission.

© 2016 Water Storage Tanks, Inc. All rights reserved.

